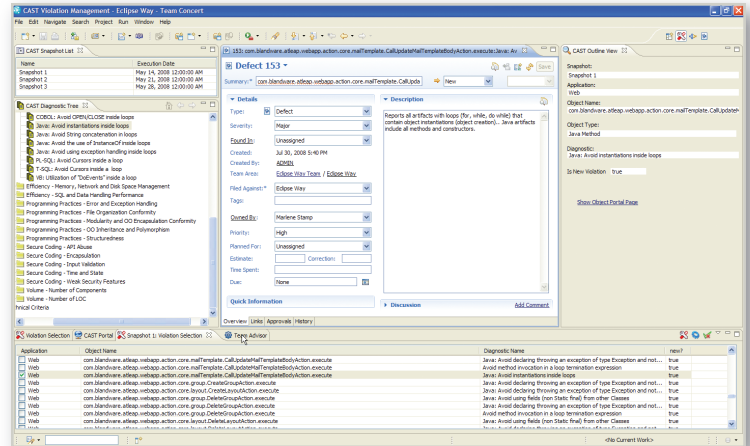


CAST AND IBM RATIONAL EXTENDING INSIGHT INTO APPLICATION DEVELOPMENT

CAST and IBM Rational are providers of solutions that address application software quality in the distributed application development life cycle. CAST and IBM Rational believe there is a significant opportunity to capitalize on their combined strengths by offering an integrated technical solution. This solution will deliver a single collaborative environment that multiple user roles can use to manage enterprise application quality.

“CAST adds a layer of intelligence to help managers correlate IBM Rational Team Concert’s project activity metrics with CAST’s internal quality insights. The combined solution provides unprecedented visibility to those in charge of globally-distributed software delivery.”

Olivier Bonsignour, CAST VP of Product Development



JOINT VALUE STATEMENT

CAST Application Intelligence offerings can empower users of IBM Rational Software Delivery Platform with a comprehensive range of consistent, accurate and actionable information regarding application development projects in the IT portfolio, enabling key initiatives such as: IT Governance, Outsourcing Management, Continuous Quality Management and Maintenance Cost Reduction.

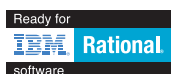
CAST INTEGRATION WITH IBM RATIONAL TEAM CONCERT

IBM Rational Team Concert is the first IBM Jazz™-based product. CAST plans to work with the RTC process component by injecting work items that will be managed by the user processes defined in their RTC environment. CAST will enable “real-time, in-context” collaboration for distributed project teams – making software development more automated, transparent and predictive. CAST users will be able to leverage the collaborative value of the IBM Jazz-based environment. Specifically, CAST technology will identify defects while measuring adherence to architecture standards, coding rules and best practices, designed to make software development a standardized, repeatable, and measurable process.

IBM Rational Team Concert is the first IBM Jazz-based product family. CAST extends the IBM Rational Team Concert source code management component to enable “real-time, in-context” collaboration for distributed project teams – making software development more automated, transparent and predictive. CAST users can leverage the collaborative value of the IBM Jazz-based environment. Specifically, CAST technology identifies defects while measuring adherence to architecture standards, coding rules and best practices, therefore making software development a standardized, repeatable, and measurable process.

“IBM Jazz-based technology is revolutionizing how organizations will collaborate in the future. The CAST product integration creates interoperability with IBM Rational Team Concert to allow valuable software and project metrics to be easily accessible to all stakeholders in the application development lifecycle.”

Michael Loria, IBM Rational Software



Europe
3 rue Marcel Allégot
92190 Meudon - France
Phone: +33 1 46 90 21 00

North America
373 Park Avenue South
New York, NY 10016
Phone: +1 212-871-8330